



PETERBOROUGH UNITED NEW FAN GUIDE

Weston
Homes
Stadium

WELCOME

We understand that visiting a football stadium for the first time can be a daunting experience so we've put together a guide to ensure you know everything there is to know to help make your first visit to the Weston Homes Stadium an enjoyable one.



TICKETS

Whether you have a traditional paper ticket (shown on the right) or a print at home e-ticket, there is useful information to help you on the match day. Always take good care of your ticket ensuring the barcode are not damaged as this could affect your entry into the Weston Homes Stadium.



ONLINE

www.theposhtickets.com

There are no booking fees for booking online. You can also use our print at home service free of charge.



TELEPHONE

0844 847 1934

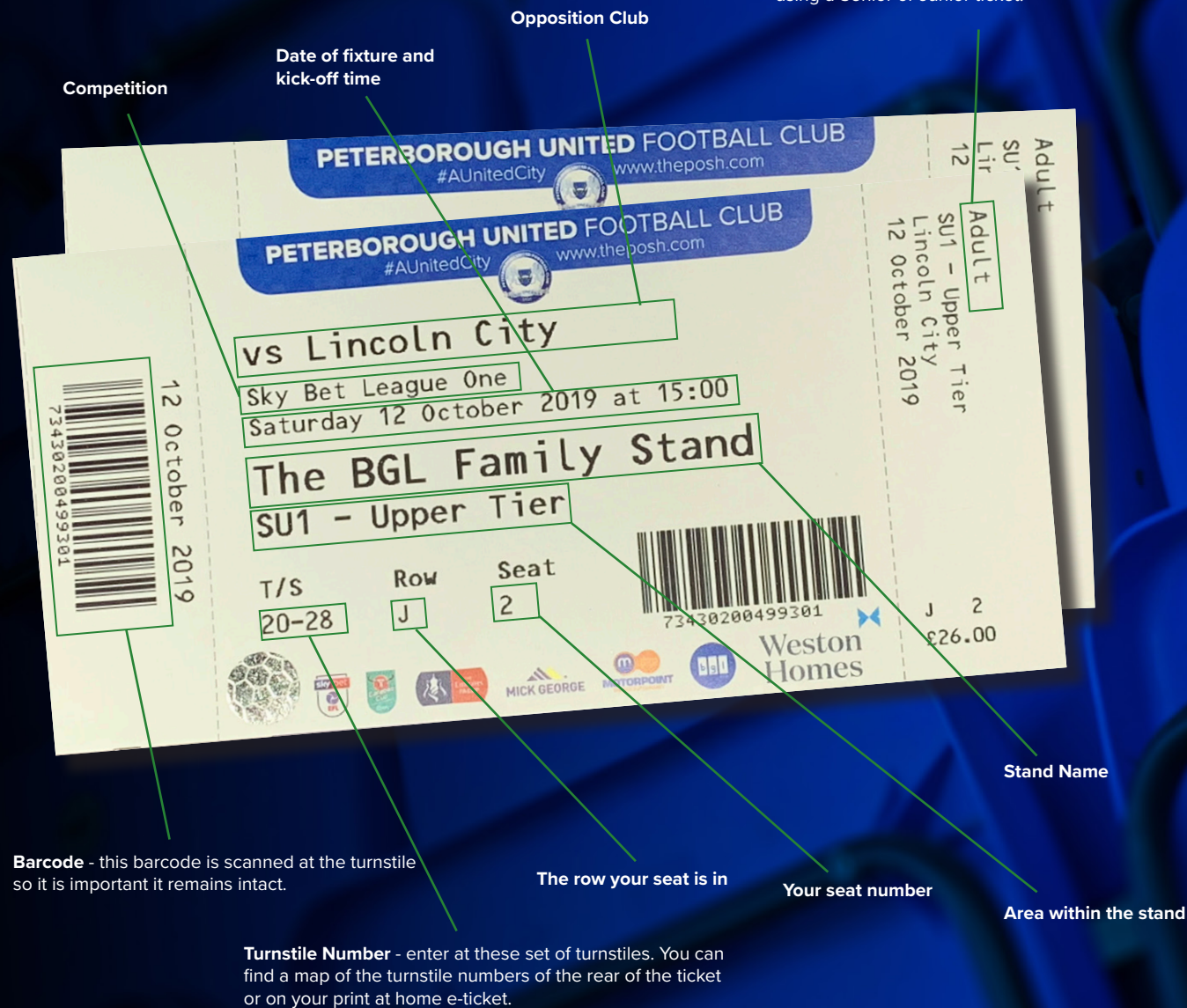
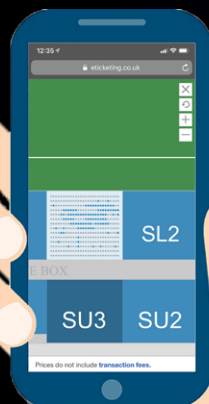
Call the Ticketmaster Hotline. Calls cost 7ppm plus your network access fee. Booking fee of £2.25 per ticket applies.



IN PERSON

Weston Homes Stadium

Visit the stadium ticket office during normal office hours:
Mondays (10am-5pm),
Tuesday-Friday (9am-5pm)
Saturdays (10am-3pm).



@theposhtickets

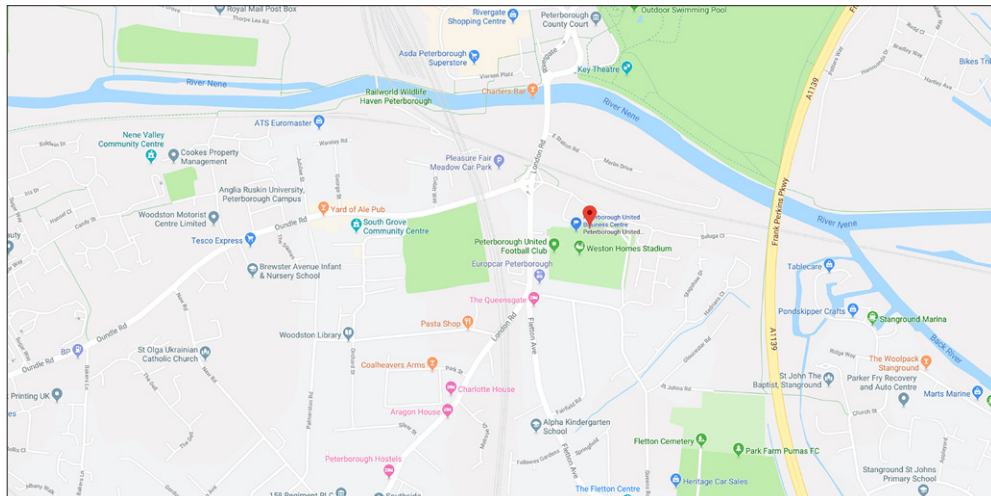
STADIUM

By Car

From South (A1): Exit the A1 at junction 17 and follow signs to Peterborough (A1139) onto the A1139 Fletton Parkway. Exit the Fletton Parkway at junction 3. At roundabout turn left onto the A1260 Nene Parkway. Take first exit and at roundabout turn right. Turn left at the next roundabout onto Shrewsbury Avenue. At T-junction after half a mile, turn right into the A605 Oundle Road. Follow road for one mile. Access to the stadium is straight on at traffic lights just before the town bridge.

From North (A1): Exit the A1 at signpost 'Leicester, Peterborough North A47'. Turn left onto the A47. Exit the A47 after 5 miles, at junction 15. At the roundabout turn right onto the A1260 Nene Parkway. Exit the Nene Parkway after 1 mile. At the mini-roundabout by the 'Gordon Arms' turn left onto the A605 Oundle Road. Access to the stadium is straight on at traffic lights just before the town bridge.

From East (A47): Exit A47 at junction 18 and follow A15 all the way to the stadium.



BGL SOUTH FAMILY STAND



By Foot From Railway Station

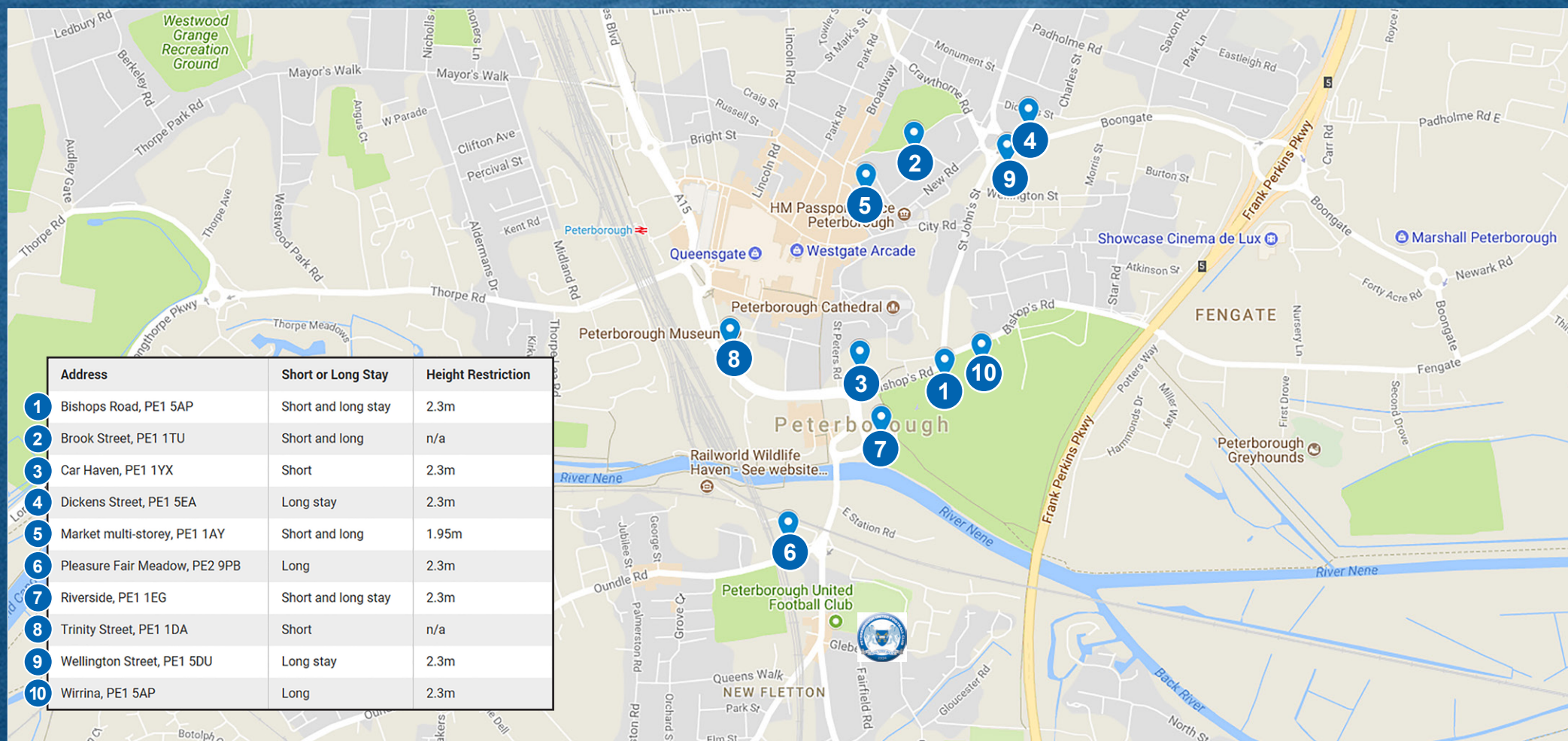
Turn right out of station and head towards the main road (Bourges Boulevard). Turn right and head towards the big roundabout. Use the pedestrian underpass and head past Asda. At the traffic lights, turn right and the ground is situated on the left hand side over the town bridge. There are of course plenty of taxi cabs available from the Railway Station if you don't fancy the 10 minute walk.

PARKING

We have no public car parking at the stadium. However, there is parking for cars and coaches in the Pleasure Fair Meadow Council and Railworld car parks opposite the stadium (adjacent to the Town bridge on Oundle Road). There are also several other pay and display car parks within walking distance shown on the map below. The Wirrina, Pleasure Fair Meadow and Wellington Street car parks are £4 for all day parking.

Disabled Parking

Peterborough United Football Club has a limited number of disabled persons parking places which need to be booked in advance by calling the ticket office on 01733 865674 (option 2) on a first come first served basis. There are also numerous disabled drop off points located around the ground.



FAN ZONE

Situated outside the Main Stand, there is plenty going on in our Fan Zone for all of the family. Try out the entertainment provided by our sponsors Mick George, Princebuild and Motorpoint.

The mobile Bar is also open for beer, wine and soft drinks.

The fan zone opens at approximately 1pm on a 3pm kick-off Saturday match day (subject to weather conditions).



SHOP

The Peterborough United Club Shop, situated next to Main Reception at the Weston Homes Stadium is the place to purchase official Posh merchandise including replica kit, leisurewear, winter jackets, souvenirs and much more.

The Posh Shop is open Mondays (10am - 5pm), Tuesday-Fridays (9am - 5pm), Saturday match day (10am-kick-off and for 15 minutes after the final whistle for home games).

Alternatively, supporters can purchase merchandise online 24 hours a day, 365 days a year at **www.theposhonlinestore.com**

Keep a look out in match day programmes and online at the club's official website, www.theposh.com, for details of regular half-term signings sessions featuring members of the squad in store!

The Match Day Programme (pictured) is filled with fun packed quizzes and challenges for the younger Posh fans, exclusive interviews, statistics, and loads more for fans to read!

It includes the freshest thoughts from the Posh manager and the latest from the Academy and Women & Girls department.

Posh fans can purchase programmes from all around the ground from official sellers, as well as in the club shop. Not only that, but if you miss one issue, you can purchase it from the Club Shop at a later date.





FAMILY STAND

The BGL Family Stand at the Weston Homes Stadium is the perfect spot to watch all of the action unobstructed and its not just the 90 minutes of football to keep you entertained!

We have a range of activities within the concourse of the two-tiered stand to keep younger fans occupied including Playstation games, face painters and the chance to meet mascot Peter Burrow in "Peter's Burrow"!

Not only that, but the concourse has refreshment kiosks including a bar and the Club Shop. The concourse also has television screens to keep supporters up to date with the half-time scores and a live feed of the game so you don't miss any of the action if you want to grab something during the game.





PETERBOROUGH UNITED FOOTBALL CLUB
UPON THIS ROCK
1934

KEBAB & ANY HOT OR COLD SOFT DRINK

KEBAB COMBO

£6.00

*Excluding Classic Coca-Cola: £2.90



FOOD:

PIE/PASTY (V)/SAUSAGE ROLL	£3.40
1/4 POUND BURGER	£3.80
1/4 POUND CHEESEBURGER	£3.90
HOTDOG	£3.80
MEAT IN FLATBREAD	£4.50
	£1.30
	£1.40

FOOD & DRINK

The refreshment bars around the ground offer a range of food and drink. Peak times are at half-time.

FOOD

PIE/PASTY (V)/SAUSAGE ROLL	£3.50
1/4 POUND BURGER	£3.90
1/4 POUND CHEESE BURGER	£4.00
HOTDOG	£3.80
SPICY CHICKEN BURGER	£4.50

DUO CHOCOLATE BARS	£1.30
GRAB BAG CRISPS	£1.10
SHORTBREAD	£1.00
CONFECTIONARY BAGS	£2.90

DRINKS

SOFT DRINKS (EXCLUDING CLASSIC COKE)	£2.20
CAPRI SUN	£1.50
WATER	£2.00

ALCOHOL

CARLING 500ml/4.0%	£4.50
WORTHINGTONS 440ml/3.6%	£4.30
KINGSTONE PRESS CIDER APPLE/BERRY (500ml/5.3% & 4.0%)	£4.50

HOT DRINKS

COFFEE/TEA/HOT CHOCOLATE/BOVRIL	£2.20
---------------------------------	-------

COMBOS

(INCLUDES DRINK)

CHICKEN BURGER COMBO	£6.00
HOT FOOD COMBO	£5.00

MATCH DAY

Timings are approximate and based on a typical 3pm Saturday kick-off.



1.45pm

First time fans initiative photographs take place pitch-side. Email newfans@theposh.com if you would like to register

10am

Ticket Office and Club Shop opens

1.30pm

Turnstile open

1pm

Fan zone opens including Mobile Bar



2pm

The team-sheets are officially printed and distributed in print to sponsors and via social media to supporters.

2.35pm

Pre-match presentations including Hall of Fame/player of the month could be taking place



2.45pm

Flag bearers get into position

2.55pm

The teams and mascots come onto the pitch

4pm

The second half kicks-off

4.45pm

Full-time. Have a safe trip home!

3pm

The match kicks-off

2.20pm

Both sets of players come onto the pitch for their pre-match warm-up

3.45pm

Half-time. Entertainment on the pitch including the Mick George Skip Challenge, Princebuild's "dizzy" penalty kicks and small-sided games. Birthday messages and half-time draw winner announced over tannoy.



5pm

PETER'S GUIDE TO THE GAME!



Each team has 11 players including a goalkeeper. Each team can also have up to 7 named substitutes and use 3 of them during the match.



Each match lasts 90 minutes (two 45 minute halves)



The teams swap ends after half-time.



The referee may add on additional time at the end of each half for stoppages or time-wasting.

There is one main referee who has a whistle and will try to keep the teams playing to the rules. There are also two assistant referees who will flag for throw-ins and offsides (please don't ask about the offside rule - ask your parent or guardian!).



All players have their own squad number on the back of their shirts.



Peterborough United wear blue and white kit.



CONTACTS

Here's a list of helpful telephone numbers, email addresses and social media accounts.

SUPPORTER LIAISON OFFICER

You may see our independant Supporter Liaison Officer Chris Abbott around on match days. You can contact him on fans@theposh.com or on twitter [@theposhSLO](https://twitter.com/theposhSLO)

EMAIL ADDRESSES

General Enquiries info@theposh.com
Ticket Office tickets@theposh.com
Club Shop clubshop@theposh.com
Commercial commercial@theposh.com
Media media@theposh.com
Catering & Hospitality hospitality@theposh.com

WEBSITES

www.theposh.com - main club website
www.theposhtickets.com - buy tickets and membership
www.theposhonlinestore.com - buy merchandise
www.theposhtv.com - online TV service
www.theposhpics.com - buy Posh pictures
www.theposhfoundation.com - Posh in the Community
www.theposhfundays.com - football fun days for youngsters
www.theposhforum.com - talk to other Posh fans online

TELEPHONE NUMBERS

Main Switchboard 01733 563947
Ticket Office Enquiries/Disabled Sales 01733 865674 (option 2)
Ticketmaster Hotline 0844 847 1934 (calls cost 7ppm plus your network access fee)
Club Shop 01733 865668

SOCIAL MEDIA
[@theposhofficial](https://twitter.com/theposhofficial)

